



Issue: 7

Friday 5th December 2025

Christmas Markets

Message from the Headteacher

Dear Parents, Carers, Children and Members of St George's Community,

A huge thank you to everyone who attended our Christmas Markets and supported the school. Your presence made the event feel truly special and created a wonderful festive atmosphere for our children and community.

By coming along, enjoying the stalls, and taking part in the celebrations, you have helped us raise valuable funds that will directly benefit our pupils. Your support means so much to us and makes a real difference.

A special thank you goes to our amazing PTA, whose hard work and dedication in organising the markets made everything possible. From planning and setting up, to

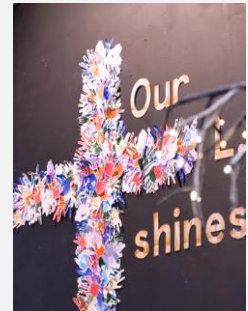
running stalls and creating such a joyful experience, we truly appreciate all that you do for the school.

As a school we continue to work hard in all curriculum areas, while also looking forward to some exciting, upcoming events.

The Christmas performance in the final week will be a celebration of children's talents.

Christmas dinner, which is always a festive treat.

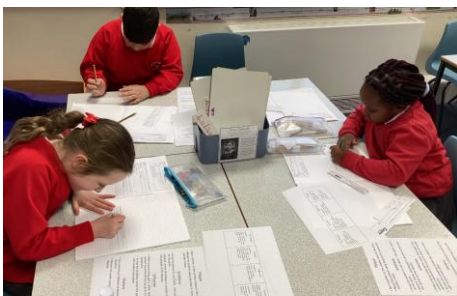
Chester Zoo will be an unforgettable experience for all our children.



Mrs Robinson (Headteacher)

St George's 'Quote of the Week'

The best way of predicting your future is to create it!



Lunch-time Clubs

Monday - Young voices and football

Tuesday - Chess and book club, parachute games and ultimate frisbee.

Wednesday - football, volleyball, Lego club and eco club.

Thursday - Rounders, skipping and TT Rockstars Club

Friday - Football, forest school and art club.

Ball games daily.

St George's 'Value of the Week'



At St George's our mission is to 'Let our LIGHT Shine'. This week, we've been focusing on the importance of engaging fully in learning. We've encouraged our children to give their best effort in every lesson, reminding them that trying hard is the key to growing and achieving their full potential.

Learning from the Week!

Lilac Class – Maths

In Maths, Lilac class have been busy finding one less this week!

Questions:

Can you ask your child to find one less when they are playing with their favourite toys?



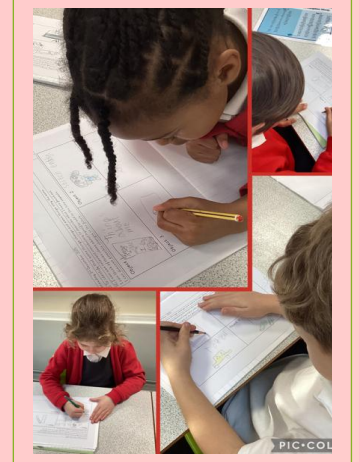
Elm Class - History

In history we have been planning what we would put in our time capsule for future generations.

Questions:

What is a time capsule?

Why might future generations be interested in our things?



Dawn Class – History

This week Dawn class have been working hard in history. They have been diagnosing diseases from Victorian and Tudor times.

Questions:

1. What were the four diseases we were learning about?
2. Can you remember one of the treatments that was used?



Fern Class - History

The children have been learning about the Ancient Maya. The Ancient Maya were a Central American civilisation known for building great cities, creating a writing system, and developing advanced knowledge of farming, astronomy, and calendars.

Questions:

1. What important belief did the Maya have about gods and goddesses?
2. Why do you think the Maya had different Gods for different parts of life, such as rain, sun, and storms?
3. Which Maya God was known as the creator God?

Oak Class – Maya Gods

Year 6 have been learning about street art and practising drawing using one point perspective.

Questions:

Name an artist who uses one point perspective.
What makes good street art?
What are 2 positives of street art?



To register for our band, follow the link
www.irockschool.com/enrol



This week's special award winners!

Congratulations to the following winners who have demonstrated outstanding behaviour choices or shown a superb attitude to learning or for a special achievement.

St George's 'Superstars of the Week'

Lilac class	Mia
Elm class	Coby
Dawn class	Mashaal
Fern class	Jade
Oak class	Molly

St George's 'LIGHT' Book winners

The Hive	Lily
Lilac class	Bailey
Elm class	Abubakar
Dawn class	Dexter
Fern class	Grace
Oak class	Zaara

Dates for your Diary

11.12.25	Christmas Jumper day
15.12.25	Christmas performance 2pm
16.12.25	Christmas performance 9.30am
17.12.25	Chester Zoo Visit
18.12.25	Christmas Dinner
19.12.25	Last day of autumn term
05.01.26	Return to school
21.01.26	Fern class assembly.
04.02.26	Robinwood
12.02.26	Valentines Disco
13.02.26	Young Voices

Attendance and Punctuality *(last week)*

1st place 98.6

Dawn

2nd place 98.3%

Fern

3rd place 95.9%

Oak

97% and above

Excellent

95% to 97%

Heading in the right direction
but some improvement needed

91% to 95%

Attendance is slipping: to be closely monitored.

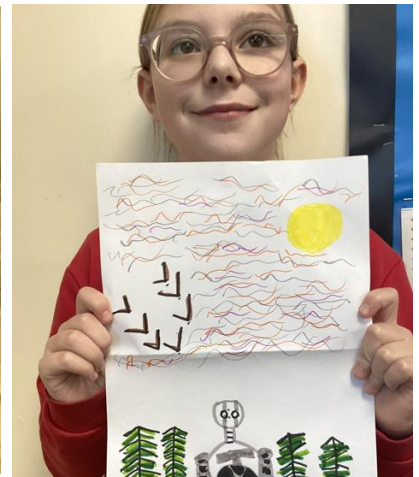
90% or below

Poor

(High numbers of children are persistently absent)

Attendance

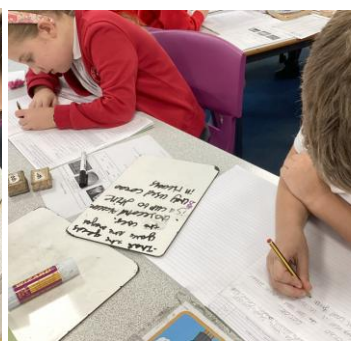
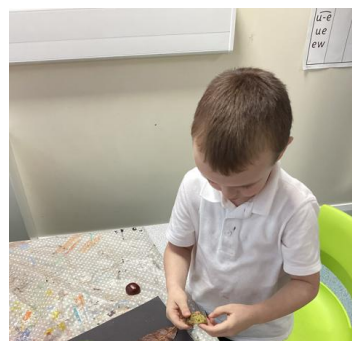
Overall	94.6%
Lilac	92.5%
Elm	87.9%
Dawn	98.6%
Fern	98.3%
Oak	95.9%



So, what's it like to be a pupil at St George's?



Spaces are available at St George's. Spread the word.



Thank you for taking the time to read this week's newsletter.
Please visit @ECSTOldham and Facebook for further information and news.