



Issue: 8

Friday 19th December 2025

Christmas Break

Message from the Headteacher

Dear Parents, Carers, Children and Members of St George's Community,

As we come to the end of this half term, I wanted to take a moment to reflect on the wonderful experiences and achievements we've shared.

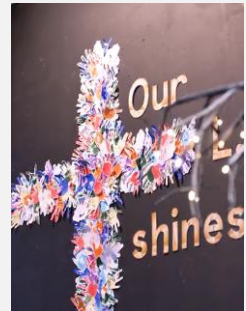
Our Christmas performance was truly magical! The children performed with such confidence and enthusiasm, and it was a joy to see their hard work come to life on stage. Thank you to all the staff and families who supported them – your encouragement made the event so special.

We had an amazing day at Chester Zoo! The children were full of curiosity and excitement as they explored and learned about the animals.

Staff have said how lovely it was to see their faces light up and hear their thoughtful questions throughout the day.

The children have finished this half term brilliantly. Their hard work, resilience, and positive attitude have been evident in everything they've done. We are so proud of each and every one of them.

Thank you for your continued support. We wish you all a restful and joyful Christmas break, and we look forward to welcoming the children back in the new year.

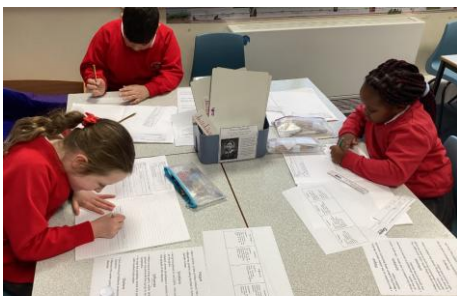


Mrs Robinson (Headteacher)

St George's 'Quote of the Week'

"Mistakes are proof that you are trying."

Children are always encouraged to 'have a go' and try their best!



Lunch-time Clubs

Monday - Young voices and football

Tuesday - Chess and book club, parachute games and ultimate frisbee.

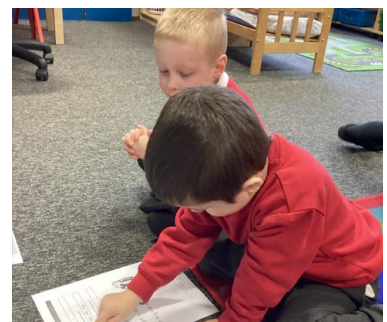
Wednesday – football, volleyball, Lego club and eco club.

Thursday - Rounders, skipping and TT Rockstars Club

Friday - Football, forest school and art club.

Ball games daily.

St George's 'Value of the Week'



At St George's our mission is to 'Let our LIGHT Shine'. This week, we have been focusing on supporting others and showing that we care for one another.

Lilac Class – Reading and Writing

Lilac class have been busy reading and writing this week. Mrs Wright will be sending a sheet to practise over the holiday.

Questions:

What is the sound? Can you point and say the sound?



Elm Class - PE

This term Elm class have been focusing on gymnastics in PE with the help of Oldham Athletic Community Trust. The children have been practising their balance and jumping skills.



Can you name three types of jumps you have learnt? Can you show someone at home?

Can you tell me a method to use to help keep balanced?

Dawn Class – Science

The children in Dawn Class have been learning about states of matter this week in science.

1. Can you describe how the different states of matter can change simply by changing the temperature?
2. For water to become ice, what temperature does it need to be?



Fern Class - DT

In DT, the children have been learning about pulleys. Pulleys are wheels with grooves that hold a rope or belt and help make lifting or moving objects easier.

Questions:

1. What is a pulley?
2. How does a pulley make lifting an object easier?
3. What happens when multiple pulleys are used together?

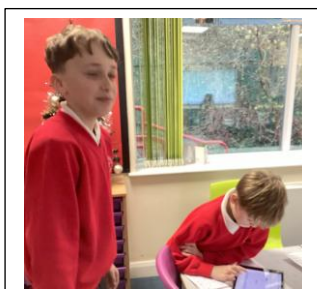


Oak Class – Science

This week Oak class have been investigating how exercise affects heart rate.

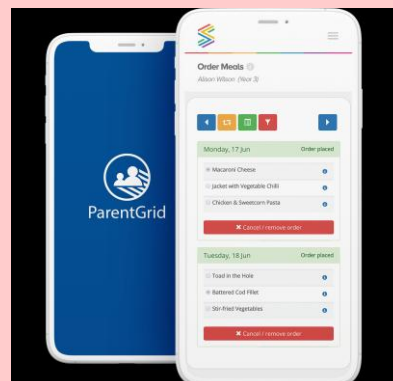
Questions:

1. What is heart rate?
2. How can you measure your heart rate?
3. How does exercise affect heart rate?



Lunch ordering made simple

Starts Monday 19th January 26



You should have received an email to register for our online meal ordering & payments.

Menu's will be available to book at the start of term.

This week's special award winners!

Congratulations to the following winners who have demonstrated outstanding behaviour choices or shown a superb attitude to learning or for a special achievement.

St George's 'Superstars of the Week'

Lilac class	Mia and Bailey
Elm class	Hattie and Jason
Dawn class	Alice and Alfie
Fern class	Scarlett and Rithmithan
Oak class	Chloe and Leo

St George's 'LIGHT' Book winners

The Hive	Ibrahim
Lilac class	Ella
Elm class	Jason
Dawn class	Alice
Fern class	Hugo
Oak class	Zaara

Dates for your Diary

05.01.26	Return to school
21.01.26	Fern class assembly.
04.02.26	Robinwood
12.02.26	Valentines Disco
13.02.26	Young Voices

Attendance and Punctuality *(last week)*

1st place 96.9%

Fern

2nd place 95.2%

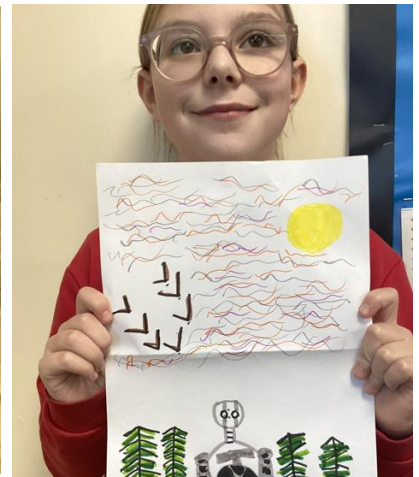
Dawn

3rd place 94.4%

Elm

97% and above
Excellent
95% to 97%
Heading in the right direction but some improvement needed
91% to 95%
Attendance is slipping: to be closely monitored.
90% or below
Poor (High numbers of children are persistently absent)

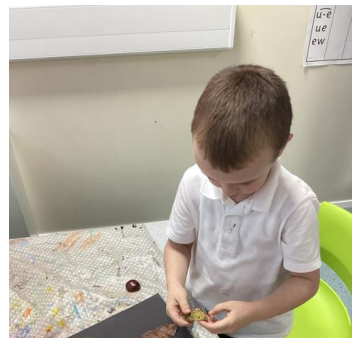
	Attendance
Overall	91.5%
Lilac	78.8%
Elm	94.4%
Dawn	95.2%
Fern	96.9%
Oak	92.4%



So, what's it like to be a pupil at St George's?



Spaces are available at St George's. Spread the word.



Thank you for taking the time to read this week's newsletter.
Please visit @ECSTOldham and Facebook for further information and news.